



First choice when
quality counts.™

Husky™ 3275

Air-Operated Double Diaphragm Pump

- Bolted leak-free flanged connections - no clamp bands used!
- Large flow paths that can handle high viscosities
- Easy air valve maintenance
- Heavy-duty construction
- Fluid flow up to 275 gpm (1040 lpm)

The most
reliable and
easy-to-service
3 in. (76 mm)
pump on the
market today!



The Husky 3275 is the biggest pump in Graco's double diaphragm lineup. Its larger size enables it to deliver over 275 gallons (1041 liters) per minute.

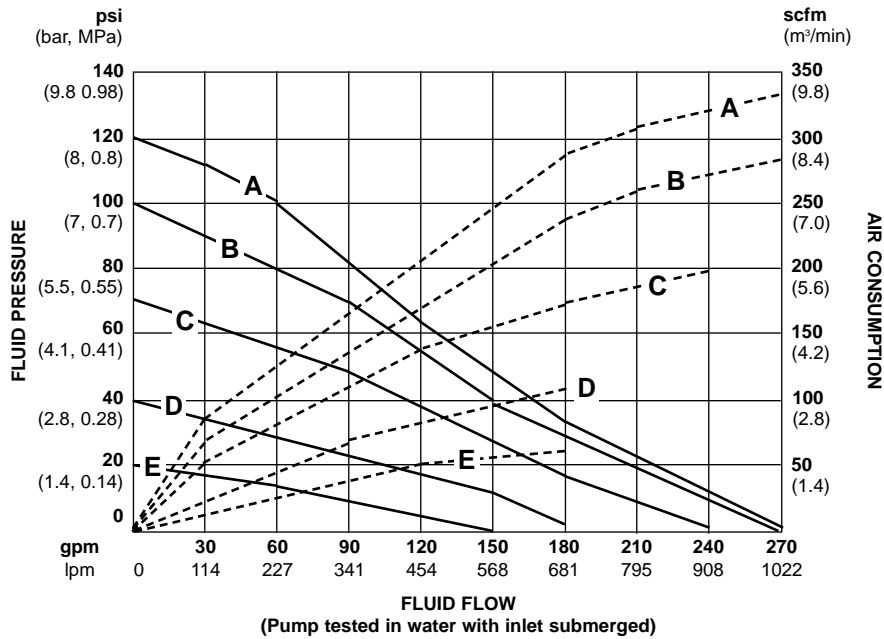
The lube-free Husky 3275 pump was engineered with the chemical, petrochemical, paper and mining industries in mind. It boasts the most reliable and trouble-free air switching valve in the world. The innovative design of the air switching valve prevents shut-down and air valve hang-up problems and can be serviced without disassembling the pump.

The pump's heavy-duty construction make it ideal for handling the most difficult chemical transfer, filter press feed, and dewatering applications.

Technical Specifications

Maximum fluid working pressure	120 psi (0.84 MPa, 8.4 bar)
Air operating range	20-120 psi (0.14-0.84 MPa, 1.4-8.4 bar)
Maximum air consumption	325 scfm
Air consumption	
at 70 psi (480 kPa, 4.7 bar) / 100 gpm (379 lpm)	120 scfm (1.26 m ³ /min)
Maximum free flow delivery	275 gpm (1,041 lpm)
Maximum pump speed	135 cpm
Gallons (liters) per cycle	2.0 (7.6)
Maximum suction lift (water)	
Dry	8 ft. (2.4 m)
Wet	25 ft. (7.6 m)
Maximum size pumpable solids	3/8 in. (9.4 mm)
Air inlet	3/4 npt(f)
Maximum operating temperature	150°F (65°C)
Fluid inlet	3 in. ANSI 4 bolt flange / DIN 8-bolt flange
Fluid outlet	3 in. ANSI 4 bolt flange / DIN 8-bolt flange
Wetted parts	
Aluminum	aluminum, Teflon, Santoprene, Hytrel, plated steel, acetal, SST
Weight	
Aluminum	150 lbs. (68 kg)
Instruction manual	
Aluminum	308-639

Performance Chart – Husky 3275



Key to Varying Air Pressures

- A at 120 psi (8 bar, 0.8 MPa)
- B at 100 psi (7 bar, 0.7 MPa)
- C at 70 psi (4.8 bar, 0.48 MPa)
- D at 40 psi (2.8 bar, 0.28 MPa)
- E at 20 psi (1.4 bar, 0.14 MPa)

Accessories

110-197 Quick-Connect (3/4) Air Supply Nipple
 Max. working pressure: 300 psi (2.1 MPa, 21 bar).
 Inlet/outlet: 3/4 npt(f). Steel.

110-200 Quick-Connect (3/4) Air Supply Coupler
 Max. working pressure: 300 psi (2.1 MPa, 21 bar).
 Inlet/outlet: 3/4 npt(f). Brass.

107-141 Air Shut-Off Valve Bleed
 Inlet/outlet: 3/4 npt(mxf). Bronze.

224-040 Air Guard Runaway Valve
 Max. working pressure: 120 psi (0.83 MPa, 8.3 bar).
 Max. cfm @ 100 psi (0.7 MPa, 7 bar): 250 scfm.
 Inlet/outlet: 3/4 npt(f). Aluminum alloy.

238-881 Integrated FR Assembly
 Max. working pressure: 120 psi (0.83 MPa, 8.3 bar).
 Inlet/outlet: 3/4 npt(f). Zinc.

222-011 Grounding Wire and Clamp
 Length: 25 ft. (7.6 m), 12 ga. (1.5 mm²).

180-187 High Volume Air Regulator
 Max. working pressure: 300 psi (2.1 MPa, 21 bar).
 Max. cfm @ 100 psi (0.7 MPa, 7 bar): 380 scfm.
 Quick-disconnect: 1/4 in. gauge ports.
 Inlet/outlet: 3/4 npt(f).

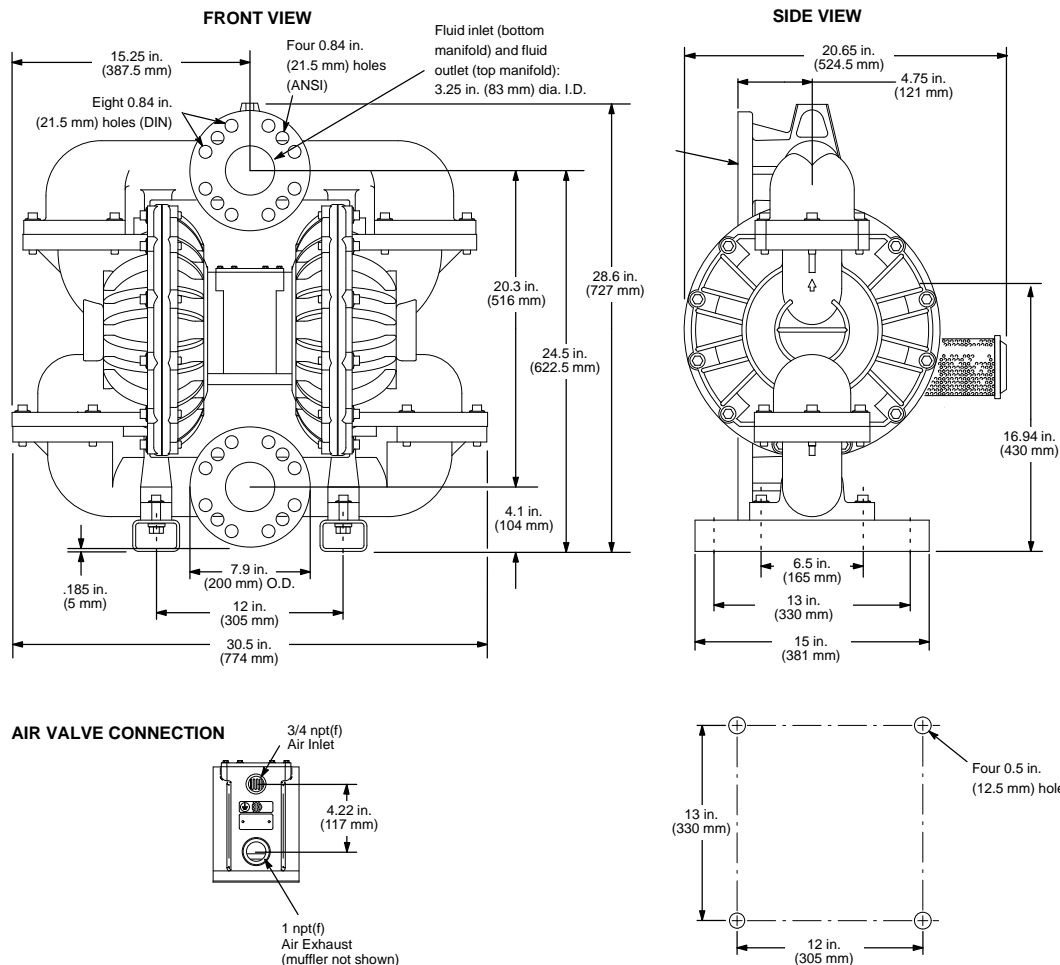
106-150 Air Filter
 Max. working pressure: 250 psi (1.72 MPa, 17.2 bar).
 Max. cfm @ 100 psi (0.7 MPa, 7 bar): 260 scfm.
 Inlet/outlet: 3/4 npt(fbe). Zinc plated.

Adapter Flange Kits
 Inlet/outlet: ANSI to npt.
239-392 Stainless steel
239-391 Carbon steel

207-675 Air Manifold 90°
 Inlet/outlet: 3/4 npt(f) x 3/4 npt(m).
 Quick-disconnect: 1/4 npt(f) and 1/8 npt(f) port.
 Carbon steel.

238-765 Air Valve Repair Kit

Dimension Drawings - Heavy-Duty Series



Ordering Information for the Husky 3275

To determine the model number of your pump from the following matrix, select the six digits which describe your pump-of-choice, working from left to right. The first digit is always "D," designating Husky diaphragm pumps. The remaining five digits define the materials of construction. Example: a pump with an aluminum air motor and fluid section, stainless steel seats, Santoprene balls, and Santoprene diaphragms is Model DK3-366.

Diaphragm Pump	Air Motor	Fluid Section	<i>Select One from Each Column</i>		
			Seats	Balls	Diaphragms
D	K	3 (Aluminum)	3 (316 SST)	1 (Teflon)	1 (Teflon)*
			5 (Hytrel)	2 (Acetal)	5 (Hytrel)
			6 (Santoprene)	6 (Santoprene)	6 (Santoprene)

*Teflon® and Hytrel® are registered trademarks of Du Pont.
Santoprene® is a registered trademark of Monsanto.*

Conversion/Repair Kits

Conversion/Repair Kits may be ordered separately. To repair the seats, balls and diaphragms, select the six digits which describe your pump from the following matrix, working from left to right. The first three digits are always D0K. The remaining three digits define the materials of construction. A choice of zero allows you to omit that component. Example: To order Teflon diaphragms only for a metal 3275 pump order D0K-001.

Diaphragm Pump	Kit	Kit	<i>Select One from Each Column</i>		
			Seats	Balls	Diaphragms
D	0	K	0 (None)	0 (None)	0 (None)
			3 (316 SST)	1 (Teflon)	1 (Teflon)*
			5 (Hytrel)	2 (Acetal)	5 (Hytrel)
			6 (Santoprene)	6 (Santoprene)	6 (Santoprene)

Sales/Distribution

North America Toll Free 800-367-4023
Telephone 612-623-6743
Fax 612-623-6580

Contact sales personnel
Locate authorized distributors
Product information literature



GRACO INC.
P.O. Box 1441
Minneapolis, MN 55440-1441



Graco Inc. is registered to I.S. EN ISO 9001.

All written and visual data contained in this document are based on the latest product information available at the time of publication. Graco reserves the right to make changes at any time without notice.